



# **2020-2021 Proposed Budget for Special Education and Related Services**

**Presented to the Board of Education  
March 18, 2020**

# Commitment to Inclusion

Least Restrictive  
Environment

Equitable Opportunities

Specialized Instruction

Academic and Social  
Development



**CHAPPAQUA**  
Central School District



# Priorities for 2019-2020

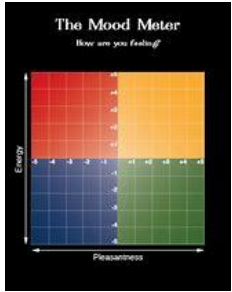
## Tri-State Recommendations:

- Develop shared language that clearly defines the service models at each school ✓
- Clarify related roles and expectations for teachers and service providers ✓
- Provide additional professional learning opportunities about inclusionary practices ✓
- Analysis of different assessment tools to support screening process & IEP program development ✓



# Priorities for 2019-2020

- **RULER - all schools**
  - HGHS - Implementation ✓
  - Bell/SB - Year 2 ✓
  - Elementary Schools - Year 1 ✓
- **Wilson Reading Fellowship - Cohort 2**
  - Plan for Reading, Special Education and ENL Teachers

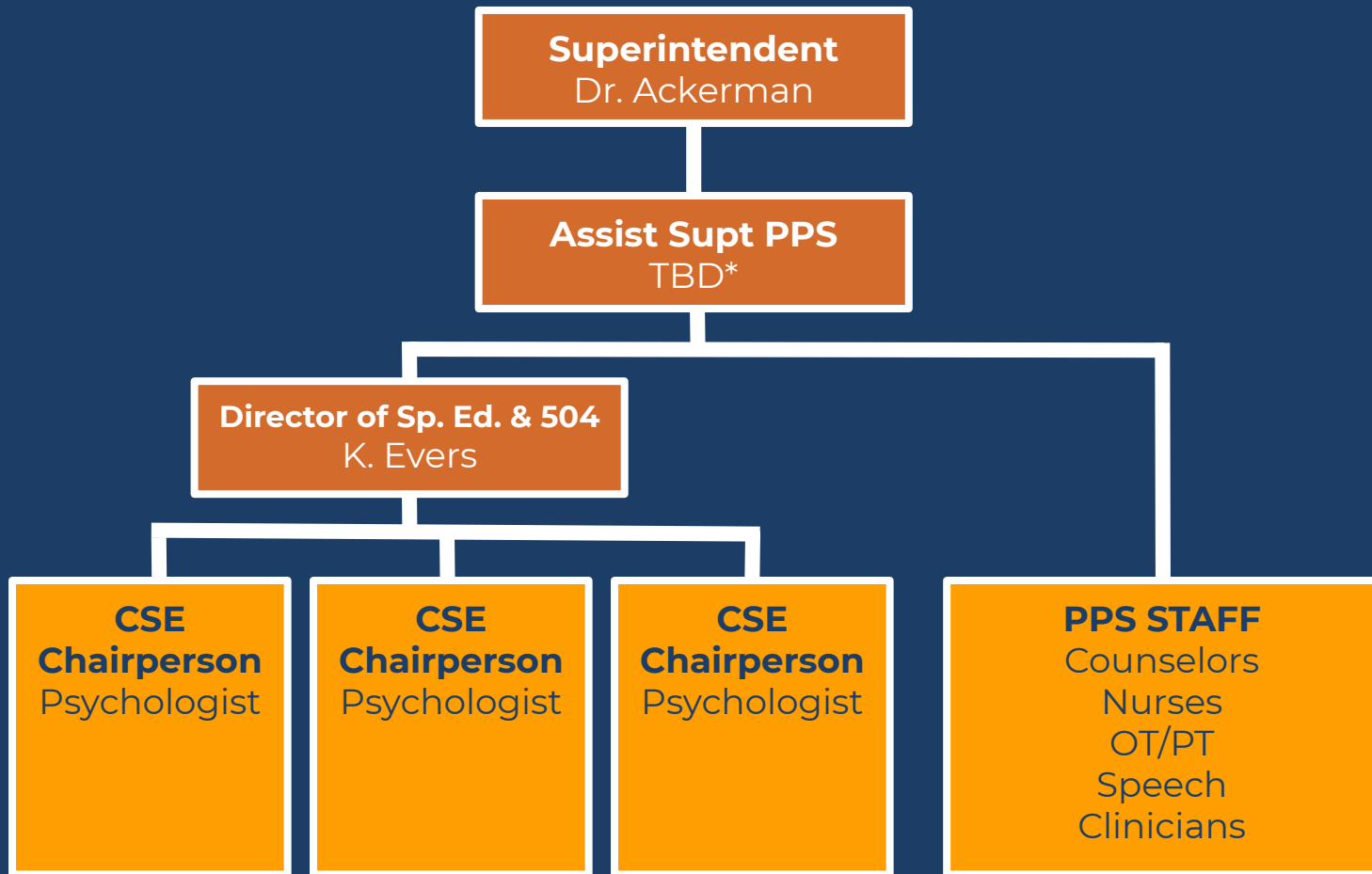




# Priorities for 2019-2020

- **Transition**
  - Job Development and Job Coaching
- **Parent Participation**
  - Advisory Committee, Special Education PTA Committee
- **Social Inclusion**
  - Unified sports
- **Section 504 Chair Responsibilities**
- **Comprehensive K-12 Counseling Review - PCG**

# PROPOSED PPS STRUCTURE





# Next Steps

- ☒ Educational Testing Protocol Records Retention Procedures
- ☒ Professional Development on Administration (3/13/20)
- ☒ CSE Chairs will be Administrators or Psychologists (Spring 2020)
- ☒ Review of Teacher Educational Testing by Psychologists
- ☐ Internal spot checks of Teacher Educational Testing



# Special Education Strategic Plan Development



1. RFP for Comprehensive Review - *March 2020*
2. Assistant Supt. Entry Plan - *Summer 2020*
3. Comprehensive Review - *Spring-Summer-Fall 2020*
4. Strategic Plan Development - *Fall 2020 - Spring 2021*
5. Report to Board of Education - *May/June 2021*
6. Strategic Plan Implementation - *2021-2022*



# Classifications by Category

Data based on VR2 Special Education October Snapshot

Disability	Oct. 2017	Oct. 2018	Oct. 2019
Autism	52	51	46
Emotional Disturbance	22	13	7
Learning Disability	98	88	96
Intellectual Disability	5	5	6
Deafness	2	1	1
Hearing Impairment	5	5	6
Speech or Language Impairment	80	72	67
Visual Impairment	0	0	0
Orthopedic Impairment	2	2	2
Other Health Impairment	109	113	106
Multiple Disabilities	13	10	8
Deaf-Blindness	0	0	0
Traumatic Brain Injury	0	0	0
<b><u>Total</u></b>	<b><u>388</u></b>	<b><u>360</u></b>	<b><u>345</u></b>

# Classification Rates

	2017-2018	2018-2019	2019-2020
Chappaqua	10.1%	9.6%	-----
Similar Districts	12.5%	12.3%	-----
NYS	15.3%	14.7%	-----



# CSE Placements (on BEDS day)

	2017-2018	2018-2019	2019-2020
In District	355	328	318
Out of District	32	31	25
Homebound	1	1	2
TOTAL	388	360	345

# CSE Placements (on BEDS day)

	2017-2018	2018-2019	2019-2020
<b>BOCES</b>	<b>8</b>	<b>8</b>	<b>5</b>
<b>Other Public</b>	<b>12</b>	<b>14</b>	<b>12</b>
<b>Approved Private Day</b>	<b>5</b>	<b>3</b>	<b>3</b>
<b>Residential</b>	<b>7</b>	<b>5</b>	<b>5</b>
<b>Total</b>	<b>32</b>	<b>30</b>	<b>25</b>



# Student Placement 80% or more inside classroom

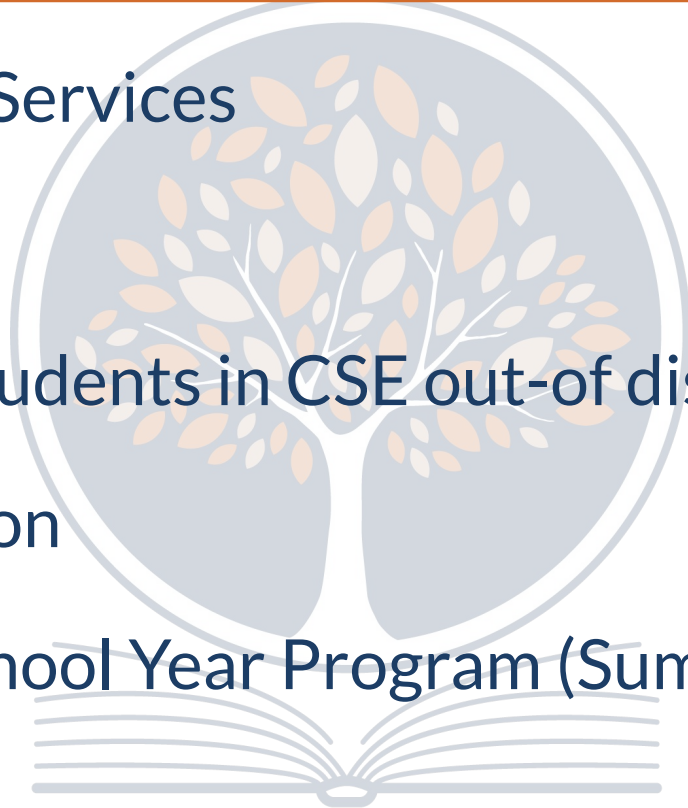
Data source SEDCAR Fiscal Accountability Summaries



	2016-2017	2017-2018	2018-2019
Chappaqua	86.1%	88.1%	87.4%
Similar Districts	61.6%	62.0%	62.6%
NYS	58.4%	58.7%	58.7%

## Main Components to Budget

- Contractual Services
- Salaries
- Tuition for students in CSE out-of-district placements
- Transportation
- Extended School Year Program (Summer)



# Proposed Special Education Budget 2020-2021

[illegible]

# Funding Sources

- **IDEA-Part B Grants**
  - 2017-2018 Budget Amount - \$ 713,013
  - 2018-2019 Budget Amount - \$ 722,639
  - 2019-2020 Budget Amount-
- **State Aid**
  - 2017-2018 Aid - \$ 1,900,773
  - 2018-2019 Aid -
  - 2019-2020 Aid -
- **Medicaid Reimbursement**
  - 2016-2017- Medicaid Assistance - \$59,490
  - 2017-2018 -Medicaid Assistance-
  - 2018-2019 -Medicaid Assistance-





**Thank You**